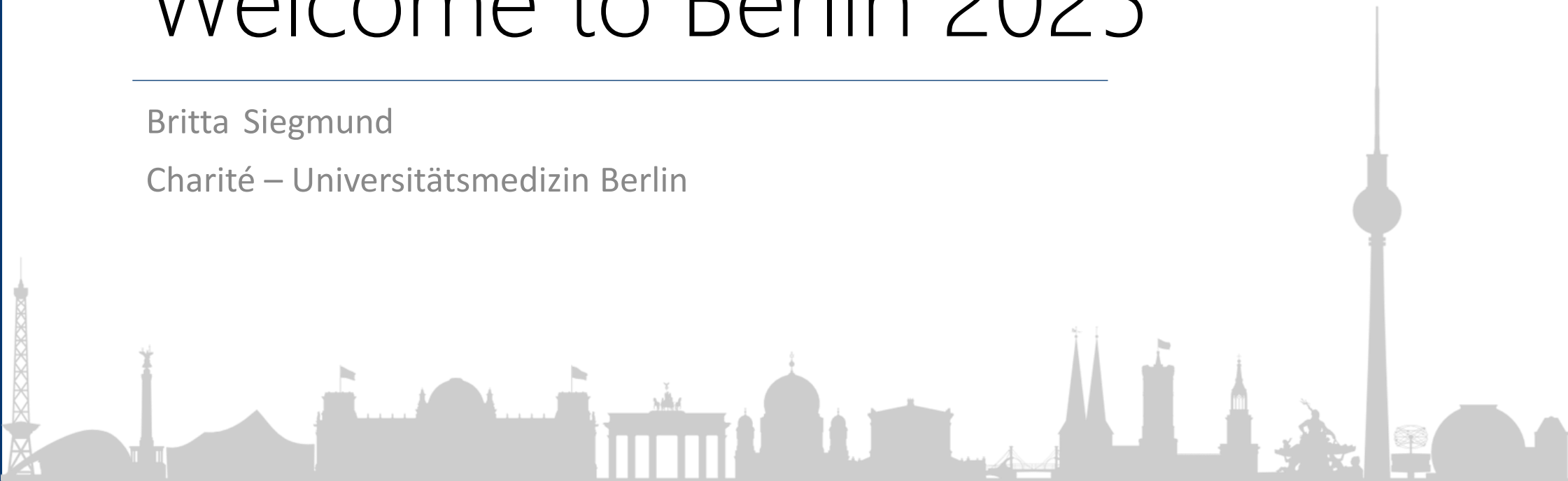


# Welcome to Berlin 2025

---

Britta Siegmund

Charité – Universitätsmedizin Berlin



ECCO gratefully acknowledges the EFCCA Grant support for N-ECCO School for over a decade



**EFCCA**  
European Federation of Crohn's  
& Ulcerative Colitis Associations

---



# Nurse Guided Poster Session

---

View all accepted  
nurse abstracts

In the Poster  
Exhibition in Hall 2.2  
on Friday, February 21  
12:40-13:40







# Sustainability in IBD Exhibition

---

Check out our pop-up exhibition dedicated to this year's Congress theme: Sustainability in IBD

Location: A Gallery, CityCube Level 1



# IBD nurse Education Programme

Improve your skills with  
hands-on training and  
build your network

3rd Cycle of IBD nurse  
Education Programme  
2024/2025 taking place  
in France



# Train the Trainer Programme

---

New **N-ECCO** initiative

Designed for **nurse-  
physician teams**

Licensing of the **ECCO Nurse  
IBD Curriculum** to  
healthcare partners, fulfilling  
local needs



**SUSTAINING NETWORK**  
**SHARING KNOWLEDGE**

LAUNCHING

THIS YEAR

JCC PLUS

JOURNAL of CROHN'S & COLITIS

---

Fully **Open Access** journal  
with a **broader scope**



R E A C H



Five clear goals shaping ECCO



# The GLOBAL REACH of ECCO

## REACH

- New **ECCO Strategy**
- Five clear goals for the next five years, **starting today**
- Expanding **ECCO Mission**

## EACH YEAR

- Focus on **one particular goal**
- Starting with **Equity in 2024**
- Commitment to strengthening international **research and collaboration**

## IN 2025

- Focus on **Attain Sustainability**
- Working towards sustainable delivery of care
- Kick-off at ECCO'25 with the Congress Theme of "Sustainability in IBD"

# The GLOBAL REACH of ECCO

## ASSESSMENT

- Internal evaluation of the potential gaps between **ongoing projects** and **the REACH Strategy**
- Identifying shortcomings and areas that need improvement

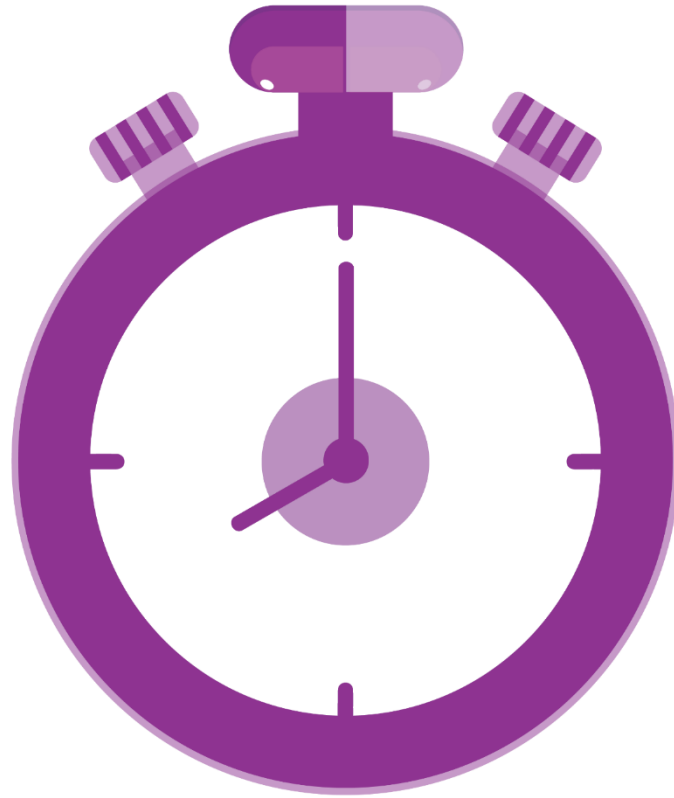
## FUTURE OUTLOOK

- New initiatives to address and close potential gaps
- Aligning future efforts closely with the **REACH Strategy**

# R

**ECCO · REACH · Rapid diagnosis and treatment**

The goal is to improve the time to diagnosis and treatment of IBD, investing in all aspects of IBD care early and throughout the disease course.



# E

**ECCO · REACH · Equitable access to IBD care**  
The goal is to enable equitable access to IBD care for all patients.





# A

## **ECCO · REACH · Attain sustainable IBD care**

The goal is to achieve sustainability in all aspects of IBD care, including delivering sustainable services through innovative assessment and monitoring, in addition to delivering sustainable research and education.





**ECCO · REACH · Causes of IBD**

The goal is to use best state of the art science and technology and global collaboration to discover the causes of IBD.



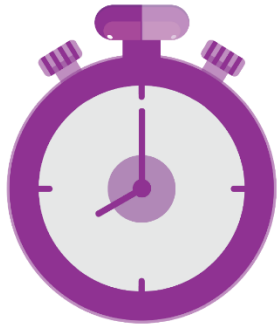


**ECCO · REACH · Holistic IBD care**

The goal is to treat beyond inflammation, ensuring holistic care and optimised psychological wellbeing.



R E A C H



Let's REACH together ...